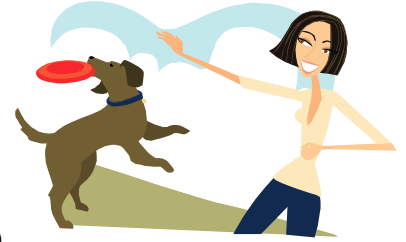




Plants Toxic to Your Pets



The list below is plants that are toxic to your pets. Pet owners should use caution if they plant these plants in their garden.

Alfalfa-*Medicago sativa* L.

Bloodroot-*Sanguinaria canadensis* L.

Bouncing Bet-*Saponaria officinalis* L.

Bull Nettle-*Solanum carolinense* L.

Bracken or Brake Fern-*Pteridium aquilinum* L.

Burning Bush see Fireweed

Buttercup-*Ranunculus* spp.

Carelessweed see Pigweed

Castor Bean-*Ricinus communis* L.

Clover, Alsike & Other Clover-*Trifolium hybridum* L. & other species

Cocklebur-*Xanthium strumarium* L.

Creeping Charlie see Ground Ivy

Crown of Thorns-*Euphorbia mili*

Curly Dock-*Rumex crispus* L.

Daffodil-*Narcissus* spp.

Delphinium-*Delphinium* spp.

Devil's Trumpet see Jimson Weed

Dogbane-*Apocynum* spp.

Dutchman's Breeches-*Dicentra cucullaria* (L.) Bernh.

Elderberry-*Sambucus canadensis* L.

English Ivy-*Hedera helix* L.

Ergot-*Claviceps purpurea* (Fr.) Tul.

Fern, Bracken-*Pteridium aquilinum* L.

Fireweed-*Kochia scoparia* L.

Foxglove-*Digitalis purpurea* L.

Ground Ivy-*Glechoma hederacea* L.

Hemlock

Poison-*Conium maculatum* L.

Water-*Cicuta maculata* L.

Horse Chestnut, Buckeyes-*Aesculus hippocastanum* L.

Horse Nettle-*Solanum carolinense* L.

Horsetails-*Equisetum arvense* L. & other species

Hyacinth-*Hyacinth orientalis*

Hydrangea-*Hydrangea* spp.

Ivy

English-*Hedera helix* L.

Ground-*Glechoma hederacea* L.

Poison-*Toxicodendron radicans* (L.)

Kuntze

Jack-in-the-Pulpit-*Arisaema* spp.

Jamestown Weed see Jimson Weed

Japanese Yew-*Taxus cuspidata* Sieb. &
Zucc.

Jerusalem Cherry-*Solanum*
pseudocapsicum L.

Jimson Weed-*Datura stramonium* L.

Kentucky Coffee Tree-*Gymnocladus*
dioica (L.) K. Koch

Kentucky Mahogany Tree see Kentucky
Coffee Tree

Klamath Weed see St. Johnswort

Lamb's Quarters-*Chenopodium album* L.

Lantana-*Lantana camara* L.

Larkspur-*Delphinium* spp.

Lily-of-the-Valley-*Convallaria majalis*

Lupine-*Lupinus* spp.

Mad Apple see Jimson Weed

Maple, Red-*Acer rubrum*

Mayapple-*Podophyllum peltatum* L.

Milkweed, Common-*Asclepias syriaca* L.

Mint, Purple-*Perilla frutescens*

Nicker Tree see Kentucky Coffee Tree

Nightshade-*Solanum* spp.

Oleander-*Nerium oleander* L.

Ohio Buckeye-*Aesculus glabra* Willd.

Philodendron-*Philodendron* spp.

Pigweed-*Amaranthus* spp.

Poison Hemlock-*Conium maculatum* L.

Poison Ivy-*Toxicodendron radicans* (L.)
Kuntze

Poke-*Phytolacca americana* L.

Purple Mint-*Perilla frutescens*

Redroot see Pigweed

Rhododendron-*Rhododendron* spp.

Rhubarb-*Rheum rhaponticum* L.

Squirrelcorn-*Dicentra canadensis*

(Goldie) Walp. see Dutchman's Breeches

Staggerweed-*Dicentra* spp. see

Dutchman's Breeches

St. Johnswort-*Hypericum perforatum* L.

Stink Weed see Jimson Weed

Stump Tree see Kentucky Coffee Tree

Sudan Grass-*Sorghum vulgare* var.

sudanense Hitchc.

Summer Cypress see Fireweed

Thorn Apple see Jimson Weed

Tulip-*Tulipa* spp.

Water Hemlock-*Cicuta maculata* L.

White Snakeroot-*Eupatorium rugosum*

Hout.

Wild Onion-*Allium* spp.