



Everbearing Strawberries

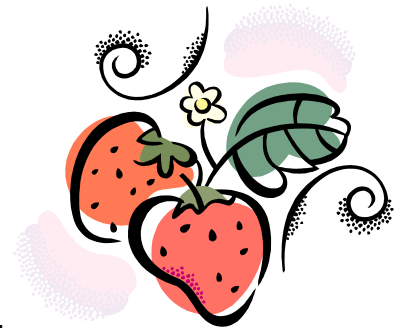
Strawberries are well set to succeed here, along the Central Coast. By adding them to your garden, you are in for the incomparable pleasure of “fresh from the garden” fruit. This flyer will help you get started.

Plant strawberries in the sunniest area of your garden. They require full sun for most of the day, although some late afternoon shade is tolerable in midsummer. Good water drainage is essential, so planting on mounded rows works well. Mix Master Nursery Gold Rush Planting Mix into top 6” of soil at 1 bag per. 25 sq.ft. Mix Master Nursery Master Start Fertilizer into soil blend at about ¼ cup per plant. Space plants 14” to 18” apart in rows 18” to 24” apart. Position the roots so that they are straight down into the ground. Do not allow them to curl up. Pack the amended soil around each plant taking care not to disturb the proper depth. Water in well and continue to irrigate as needed.

After planting, keep all flowers picked off until June 1st. This establishes a strong plant. Plants will flower and fruit the rest of the Summer and Fall until a frost occurs. The original mother plants should be removed after the first or second year and replaced with rooted runners from the previous year.

Popular Varieties

Selva: Patented variety with large fruit, firm flesh, and excellent flavor. Plants are vigorous and produce many runners. Consistent heavy producer. Berries hold up well even under wet conditions. Will flower and fruit (Independent of day length) through summer and early fall.



Seascape: Seascape originated as a cross between Selva and Douglas and is even more vigorous. Fruit is noteworthy for high flavor, high yield, large fruit size, firmness, symmetry, attractive appearance and general flexibility in planting requirements.

Tri Star: Berries have firm, glossy, deep red skin with solid, medium red flesh. Fresh fruit flavor is excellent and also recommended for freezing. This is a good variety for hanging baskets. Fall crop is the heaviest.

